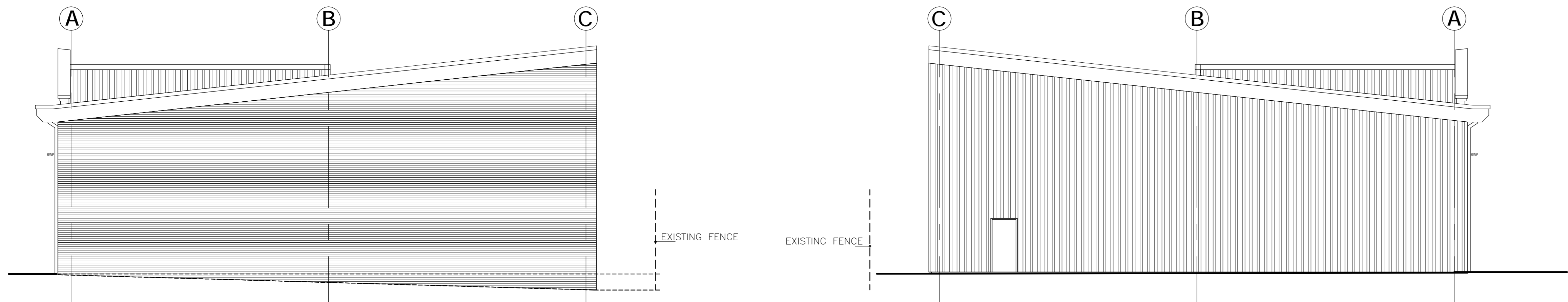


NOTES:
 This drawing and design is the copyright of Alan Johnson Associates and must not be reproduced in part or in whole without prior written consent. Care should be taken to verify all dimensions on site before commencing work or preparing shop drawings. If in doubt ASK.



BLOCK A UNIT 1 – Side Elevation
SECTION KEY (nts)

BLOCK A UNIT 9 – Side Elevation
SECTION KEY (nts)

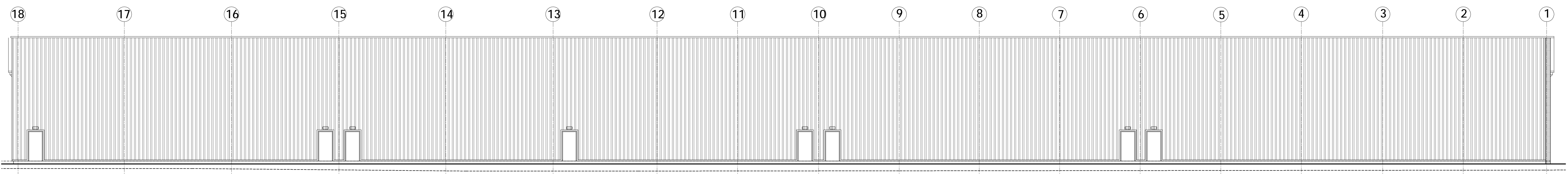
B1 UNIT BLOCK A EXTERNAL FINISHES
 HPS200 coated trapezoidal steel roof cladding with rooflights to 10% of roof area
 Polyester powder coated pressed metal gable copings
 Polyester powder coated pressed metal boxed gutter fascias and raps with end gable verge fascias to match
 Facing brick to LA approval
 Polyester powder coated glazed entrance facade installations with anti-sun glazing
 HPS200 coated insulated steel sectional overhead goods access doors with matching composite insulation panel fascia over
 Stack bonded fairfaced concrete facing blocks as a feature panel between loading doors

SCHEDULE OF ACCOMMODATION

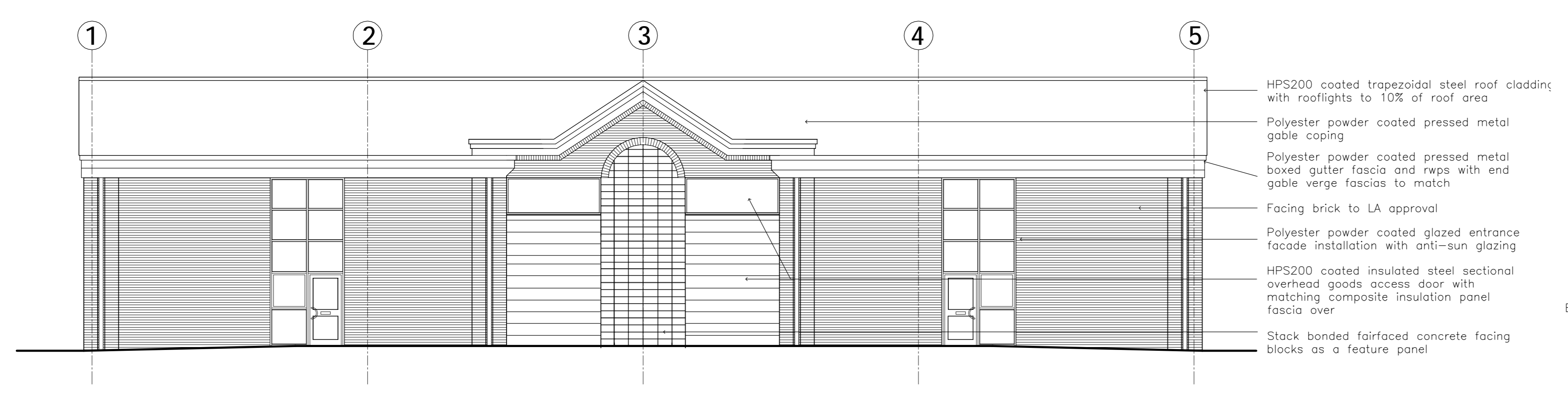
GROSS INTERNAL AREAS			GROSS EXTERNAL AREAS		
NEW UNITS	m ²	sq.ft.	PARKING	m ²	sq.ft.
UNIT 1	298	3208	6 CARS		
UNIT 2	146	1572	6 CARS		
UNIT 3	280	3014	4 CARS		
UNIT 4	163	1755	2 CARS		
UNIT 5	224	2411	4 CARS		
UNIT 6	226	2433	4 CARS		
UNIT 7	226	2433	4 CARS		
UNIT 8	226	2433	4 CARS		
UNIT 9	338	3638	5 CARS	UNITS 1-9	2264 24370
UNIT 10	388	4176	5 CARS		
UNIT 11	388	4176	6 CARS	UNITS 10-11	826 8891
TOTAL	2903	31249	44 CARS		



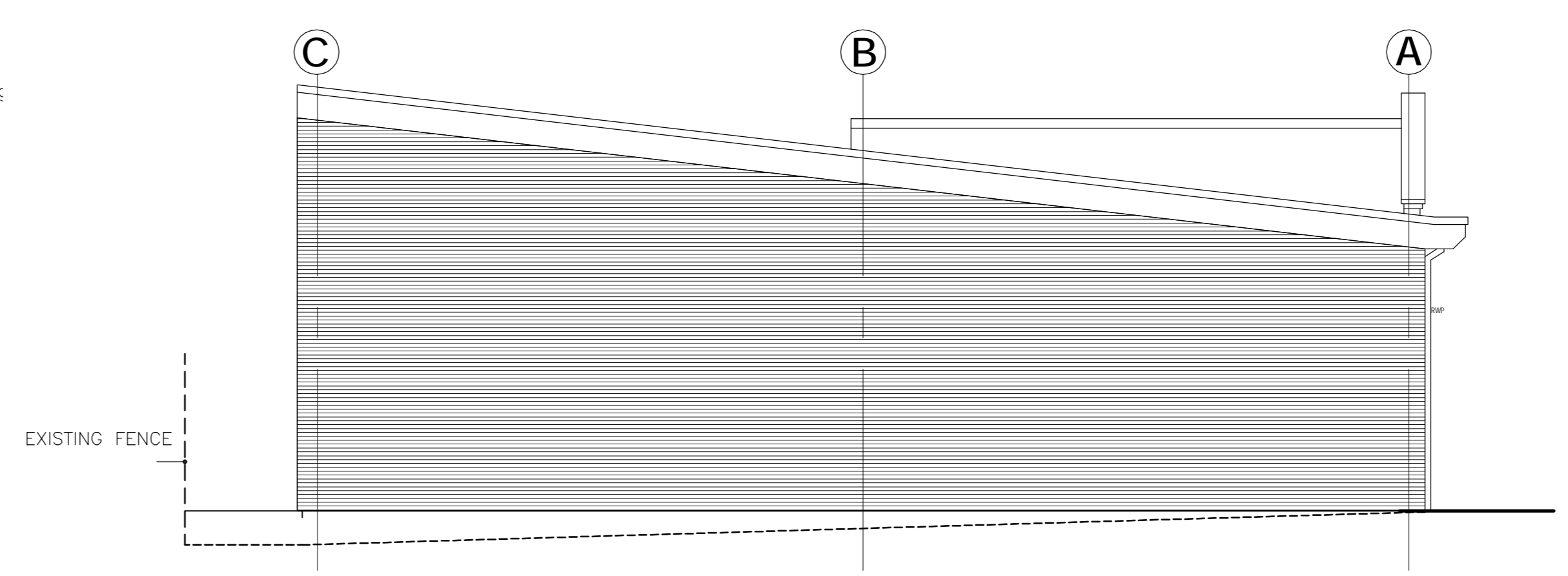
BLOCK A UNITS 1 to 9 – Front Elevation
SECTION KEY (nts)



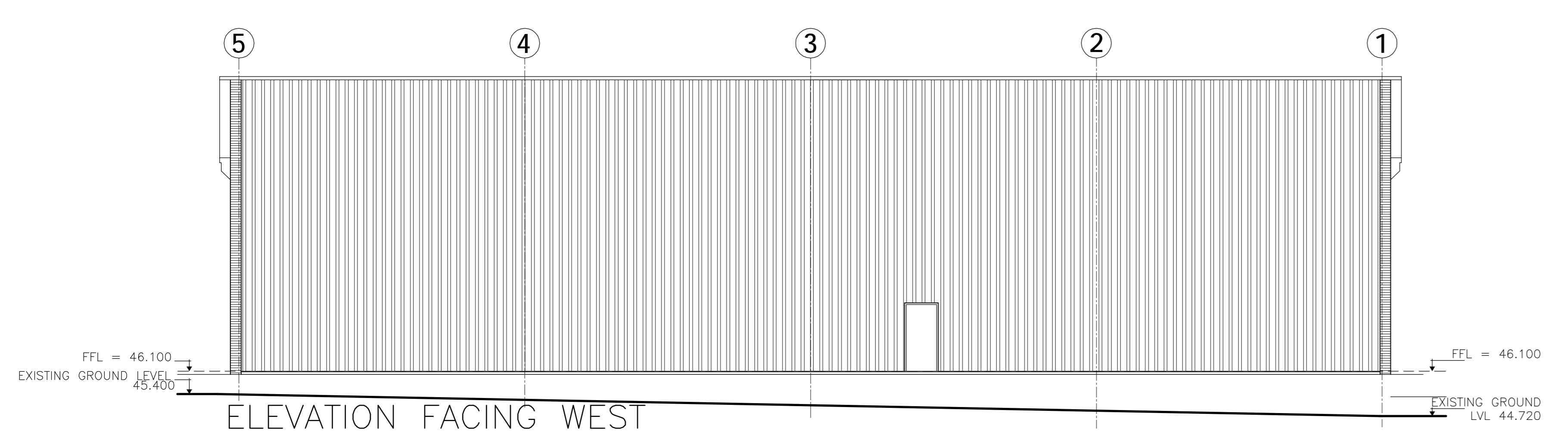
BLOCK A UNITS 1 to 9
REAR ELEVATION



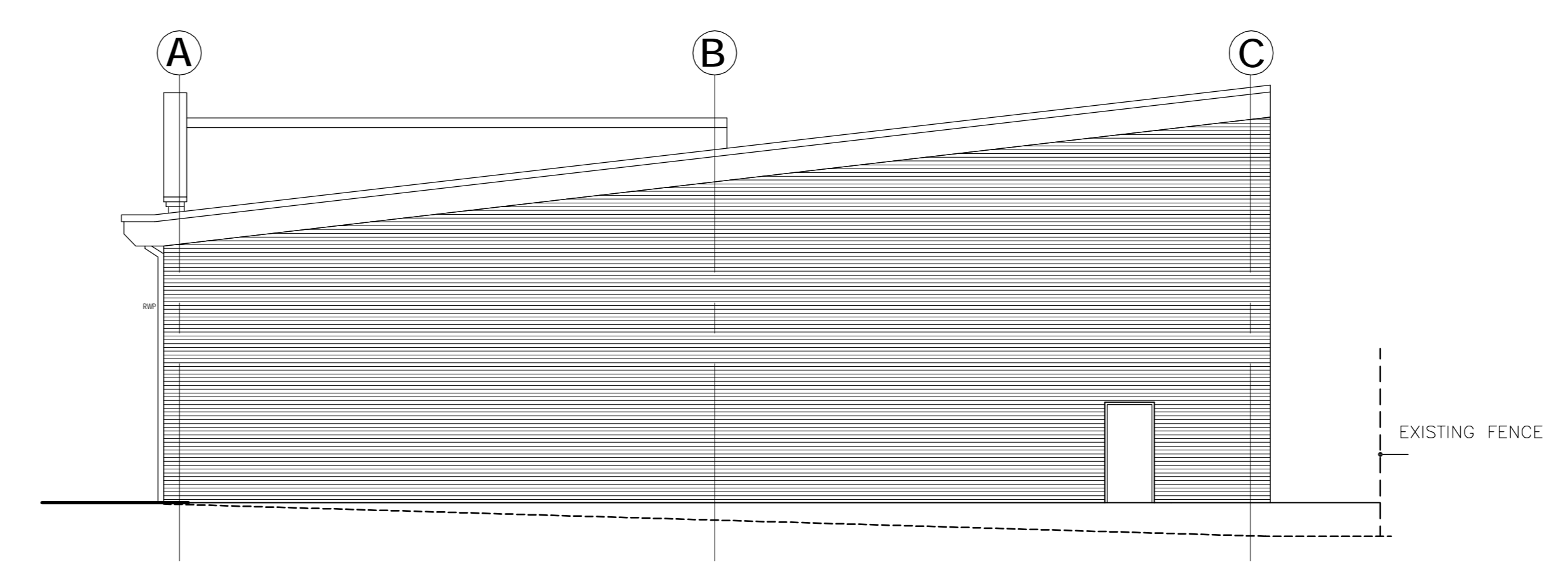
Front elevation
(UNITS 10-11)



BLOCK B UNIT 11 – Side Elevation



ELEVATION FACING WEST



BLOCK B UNIT 10 – Side Elevation

- E 15-8-07 Elevations updated for construction and planning
- D 18-5-07 Units 1-9 added and drawing file changed sb
- C 20-2-07 Fire boundary conditions noted ojt eaves detail added
- B 26-1-07 Opening light added to curtain walling installation TENDER ISSUE ojt
- A 5-12-06 Re-filled, sheet size increased to A0, ojt drawing re-scaled to 1:100

no.	date	revision	by



ALAN JOHNSON ASSOCIATES
 1170 Elbert Court, Herald Avenue
 Coventry Business Park Coventry CV5 6UB
 Tel: 024 7625 3200 Fax: 024 7625 3210
 e-mail: aja@aja-architects.com

project
**Proposed Redevelopment
 Wetmore Maltings
 Wetmore Road
 Burton on Trent**

client
**Hillarys Developments
 (No 5) LLP**

drawing
**NEW B1/2 UNITS
 UNITS 1 - 11
 PROPOSED ELEVATIONS**
 scale 1:100 @ A0 drawn ojt
 checked date rev D6

no.
4176 - 11rev E